



INVENTORY

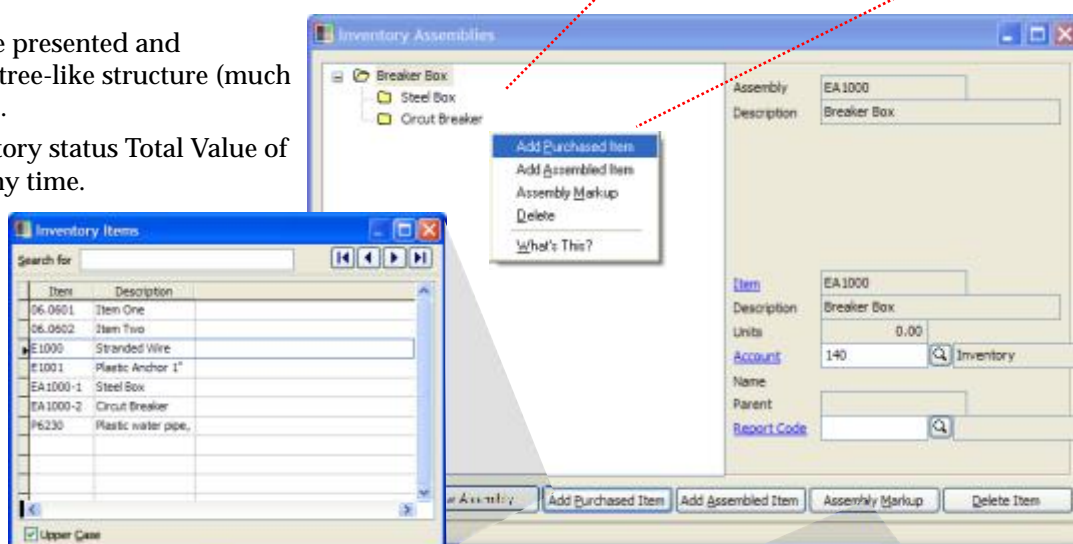
The BIS® Inventory module provides for perpetual inventory accounting. Inventory is automatically updated through Purchase Orders, Accounts Payable Invoices, Accounts Receivable Invoices, Inventory Adjustments, and Build Assemblies. Inventory Cost can be automatically transferred to Cost of Goods Sold.

Features:

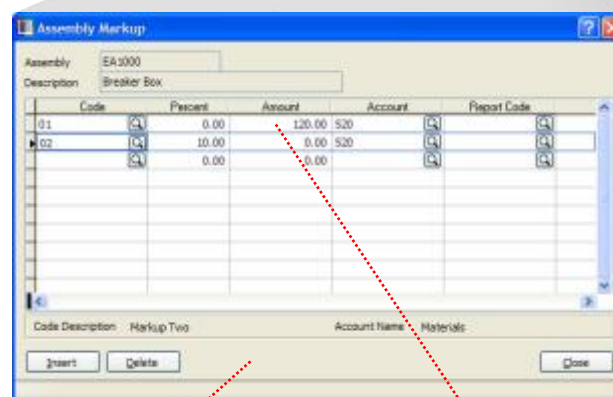
- Entries automatically update the Inventory Adjustments Journal, Inventory, General Ledger, Job Cost File, and Financial Statements.
- Inventory assemblies are presented and manipulated in a visual tree-like structure (much like Windows® Explorer).
- Up-to-the-minute inventory status Total Value of Inventory available at any time.
- Immediate access to average unit cost, unit gross margin, and total gross margin of all items.
- Transfers cost from inventory to cost of goods sold and job cost.
- When used with Accounts Receivable, Inventory provides unit gross margin and total gross margin on all items listed.
- Inventory records can be maintained by product group, subgroup, or department.
- Adjustments to the inventory count, average unit cost, and cost transfer from inventory to job cost can be done using the inventory adjustments journal.
- Suggested order quantities are provided to maintain preferred stock levels and cost of the suggested purchases are reported.
- Preferred reorder and stock-full points can be set and changed. The reorder report can show items when the quantity falls within a selected percentage of the reorder point.

Inventory Assembly uses a familiar interface to record the bill of materials.

Right-clicking displays a pop-up menu of assembly options.

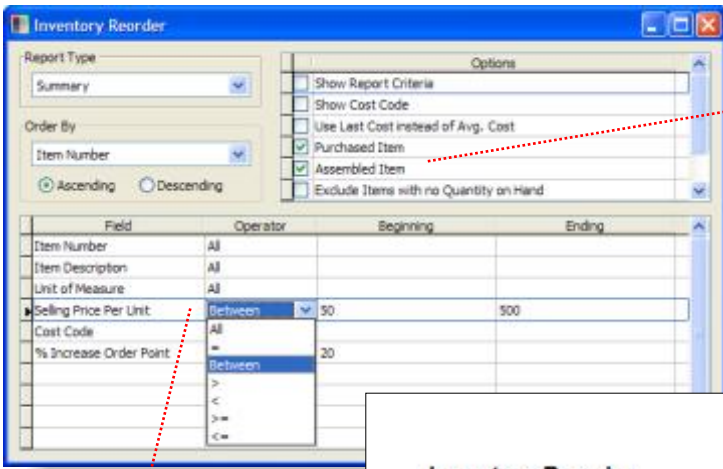


Add purchased or assembled items to bill of materials by selecting them from the inventory master list.



The Assembly Markup screen allows you to assign one or more markups to each individual assembled item.

Markups can be added as a percentage or as a fixed amount.



Report options allow you to choose to include item purchased from vendors and/or items assembled in house.

Prepares reports for inventory planning, reordering and back ordered items based on data from invoices, sales orders, purchase orders and inventory adjustments.

Set up specific reports by selecting only the inventory items needed.

Best Construction Company

Inventory Reorder
Summary Report Page 1

Item Number	Description	Unit	Type	Price IV Account	On Hand	Assigned	On Order
Vendor Id	Vendor Name				Delivery Days	Order Point	
EA1000	Breaker Box Last Sale Date: / /	EA	A	250.00 140 Year-to-Date: 0.00	0.00	0.00	0.00
	Stock Full: 50.00			Back Ordered: 0.00 Disc. Code: B Sugg Order: 50.00 Avg. Cost: 0.00	0	24.00	24.00
EA1000-1	Steel Box Last Sale Date: / /	EA	P	200.00 140 Year-to-Date: 0.00	0.00	0.00	0.00
1601	Highvolt Electric Stock Full: 100.00			Back Ordered: 0.00 Disc. Code: A Sugg Order: 100.00 Avg. Cost: 0.00	3	60.00	60.00

BIS calculates an order amount based on the reorder point and preferred stock full point recorded in the item master file.

The Inventory Items master file maintains up to 1 billion items limited only by the size of the file (2GB).

Add images to the inventory master records with the click of a button.

Reports:

- Reports Listed by Item Number, Description, Unit of Measure, Selling Price per Unit or Cost Code.
- Option to Include Assembled or Purchased Items.
- Inventory List - summary or extended report.
- Active History - with or without cost valuation.
- Inventory Adjustments Journal - by date and account; summary, detail or extended history.
- Adjustments List - by adjustment number, date, inventory account, adjustment amount or description.
- Inventory Planning Report - displays quantities on hand, assigned and on order for all items; shows the number of days to deliver and the reorder point.
- Reorder Report - calculates a suggested quantity to order for reorder items.
- Inventory Back Ordered.
- Price List.
- Inventory Labels.
- Assemblies Lists.
- Assembly Requirements Report - requirements or picking list; by assembly number or units to build.
- List of where Inventory Items are used in Assemblies.
- Assemblies Journal - by adjustment date.
- Production History - summary or detail; by build number.

